



TECHNOMELT KS 922

THE NEXT GENERATION OF HOTMELTS FOR EDGE BANDING



AGENDA

01 **Market Needs & Our Solution**

02 Why Henkel

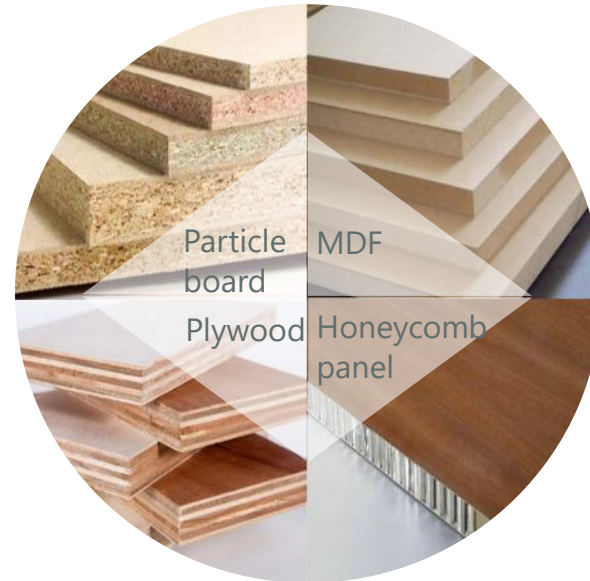
▶ EDGE BANDING

GENERAL INFORMATION

Edge banding is a multi-faceted application. There are many factors which impact effective application: wood moisture content along with room and substrate temperature play a major role. Consistent pressure of the rollers, application rate and high adhesion are the primary measures of success.



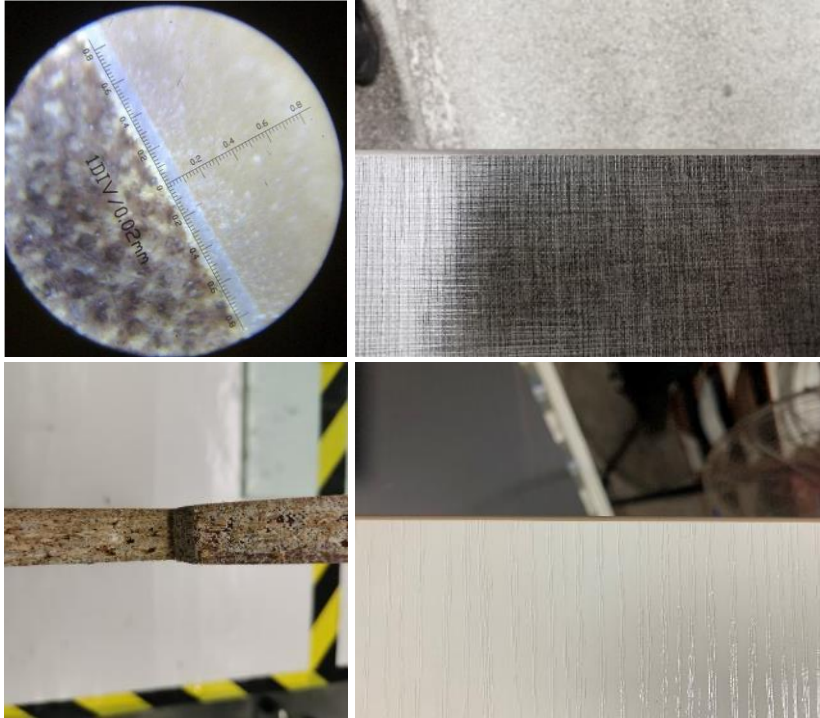
Edge Band



Board Substrate

▶ MARKET NEEDS

WHAT IS NEW REQUIREMENT FOR EDGE BANDING



- **Good Appearance**

Outstanding bond-line appearance, colored versions for invisible glue lines

- **Clean Production**

Very low stringing and smearing, less handling & contamination, easy maintenance

- **Outstanding Performance**

- High bonding strength on broad range of edge materials
- High heat resistance: no re-opening of edges when exposed to high thermal stress



▶ TECHNOMELT KS 922

HIGH-PERFORMANCE EDGE BANDING ADHESIVE

With the TECHNOMELT KS 922 for Edge Banding we enable our customers to:

- ✓ Meet today's market demand for **excellent designed and long-lasting edges** on furniture and furniture parts with a barely visible and hard glue line
- ✓ Produce edges with **increased resistance to thermal stress** which prevents joints to re-open under exposure to high temperatures (e.g. during transport and export)
- ✓ Significantly **reduce cleaning efforts** during manufacturing and produce ready-to-sell workpieces

AGENDA

01 Market Needs & Our Solution

02 **Why Henkel**

▶ TECHNOMELT KS 922 FOR EDGE BANDING

PRODUCT ADVANTAGES AND CUSTOMER BENEFITS

Product Advantages

✓	Clean running / no stringing
✓	Fast curing
✓	Low coating weight
✓	High heat resistance
✓	High bond strength on broad range of edge materials

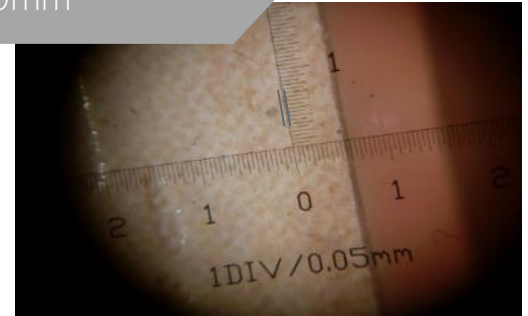
lead to

Customer Benefits

✓	Lower or no use of cleaner and release agent necessary
✓	Increase production efficiency as immediate post processing is possible
✓	Resulting in thin glue line and better edge aesthetics
✓	Securing the quality of the furniture by preventing re-opening of edges when exposed to high thermal stress
✓	Less faulty bonds, lower waste, decreased complexity

▶ WHY TECHNOMELT KS 922 ULTRA THING GLUE LINE

TECHNOMELT KS 922: 0.05-0.09mm



EVA HM: 0.15-0.18mm

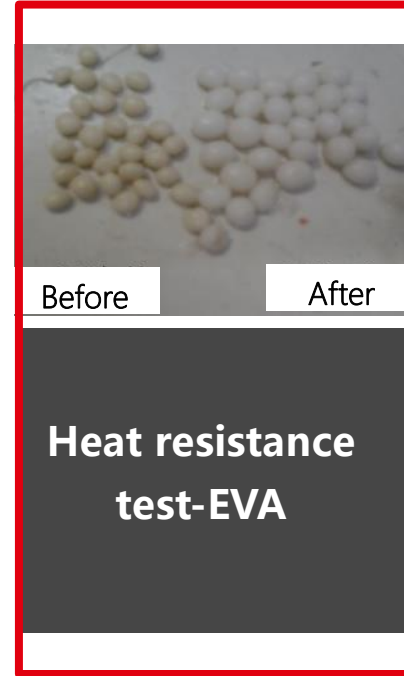
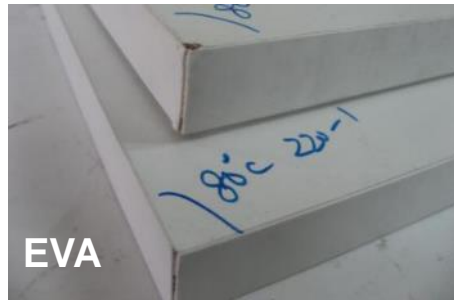


TECHNOMELT KS 922

▶ WHY TECHNOMELT KS 922

HIGH RESISTANCE TO HEAT AND SOLVENT

TECHNOMELT KS 922 has higher resistance to heat and solvent



▶ WHY TECHNOMELT KS 922

CLEAN MACHINEABILITY



Excellent



Comparison A



Comparison B

TECHNOMELT KS 922

Clean running / no stringing

Stringing, difficult to achieve a cleaning operation

Severe string, easy to cause panel pollution

▶ TECHNOMELT KS 922 for Edge Banding

THE NEXT GENERATION OF HOTMELTS



Ultra thin glue line

- Very low coating weight results in thin glue line and better edge aesthetics



High heat resistance

- Securing the quality of the furniture by preventing re-opening of edges when exposed to high thermal stress, e.g. during transport and export

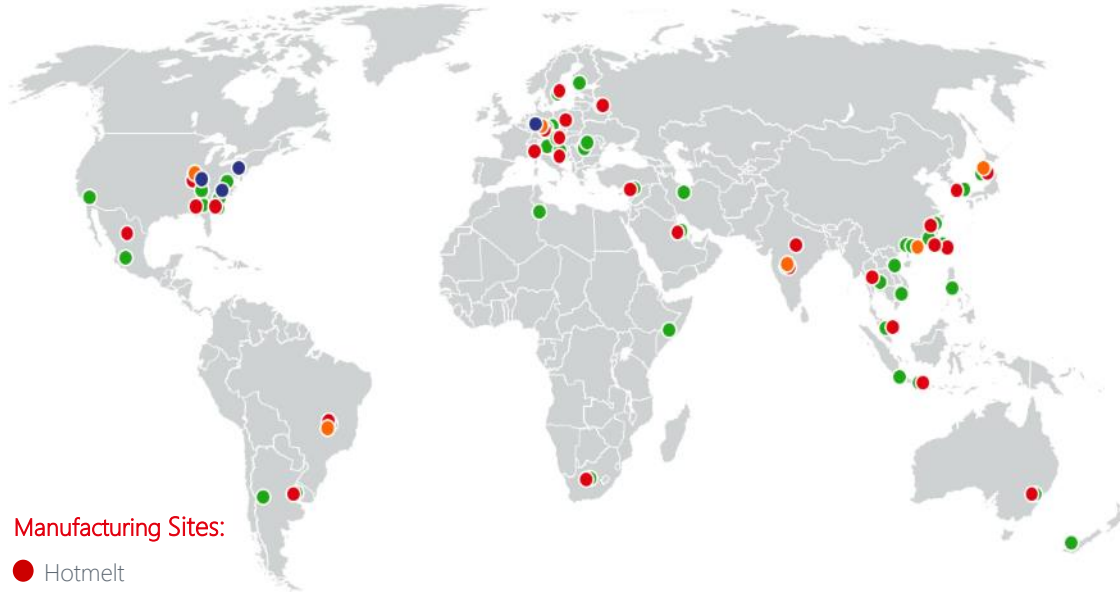


Clean Machineability

- Clean running leads to lower or no need for cleaning and release agents
- Self-cleaning properties reduce number of cleaning procedures for glue pots

> **TECHNOMELT** KS 922 meets high requirements for state-of-the-art edge banding and sets benchmarks in heat resistance and reduced cleaning efforts

▶ WHY HENKEL



Manufacturing Sites:

- Hotmelt
- Waterbased
- PU
- Others
TECHNOMELT KS 922

Global footprint to meet local needs

Wide product range of different technologies available worldwide

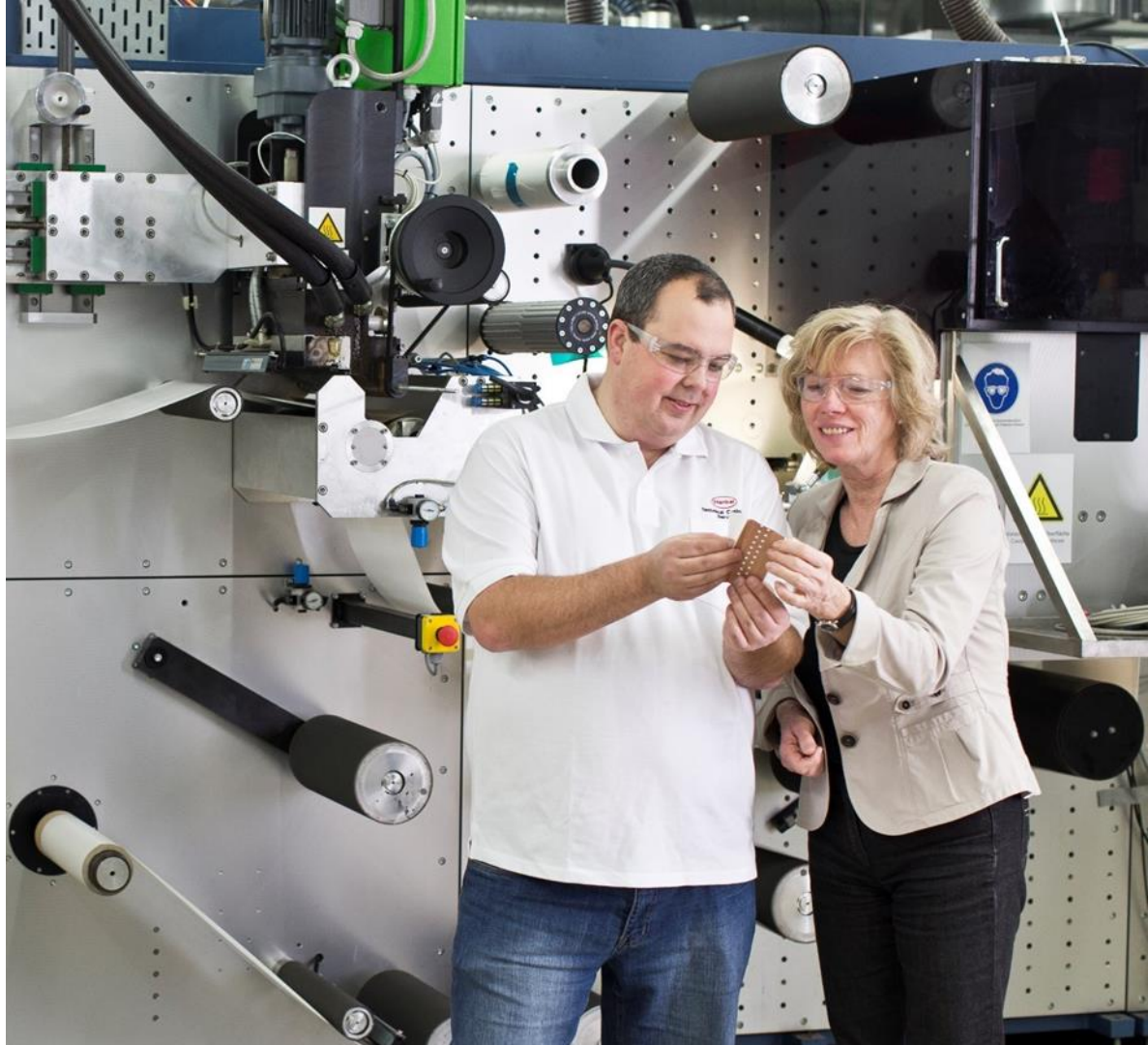
Globally aligned operations to serve you wherever you are

► WHY HENKEL

COMPREHENSIVE SERVICE & SUPPORT

- Product Safety & Regulatory Affairs
- Scientific Services
- Product Development
- Equipment Solutions
- Site Support
- Trainings

TECHNOMELT KS 922



► WHY HENKEL

We understand the changing market dynamics driven by consumer trends, and we put this knowledge into every innovative solution we develop.

Partnering with us enables you to win in your markets.



THANK YOU

